



- *Emergency Communications Basic*
- *101 Rev 2.0.1*

- INTRODUCTION TO
- **EMERGENCY** COMMUNICATIONS
- FOR
- **HAM RADIO NORFOLK**



Norfolk-ARES.org

- Norfolk Amateur Radio Emergency Service (ARES)
- Norfolk HAM Radio Emergency Response System (HAMERS)

• Richard Davis, W4NMH ec@norfolk-ares.org Emergency Coordinator (EC)

- Norfolk VHF Repeater: 145.330 MHz (-600 input, PL 131.8) Primary (Wx Alert)
- Norfolk UHF Repeater: 442.950 MHz (+5 MHz input, PL 131.8) Primary (Wx Alert)
- Norfolk VHF Repeater: 147.375 MHz (+600 input, PL 131.8) Secondary (Wx Alert)
- EOC Tactical Repeater: 444.475 MHz (+5 MHz input, PL 74.4) Tactical (Wx Alert)

• aresva.org/aresva/skywarn.html

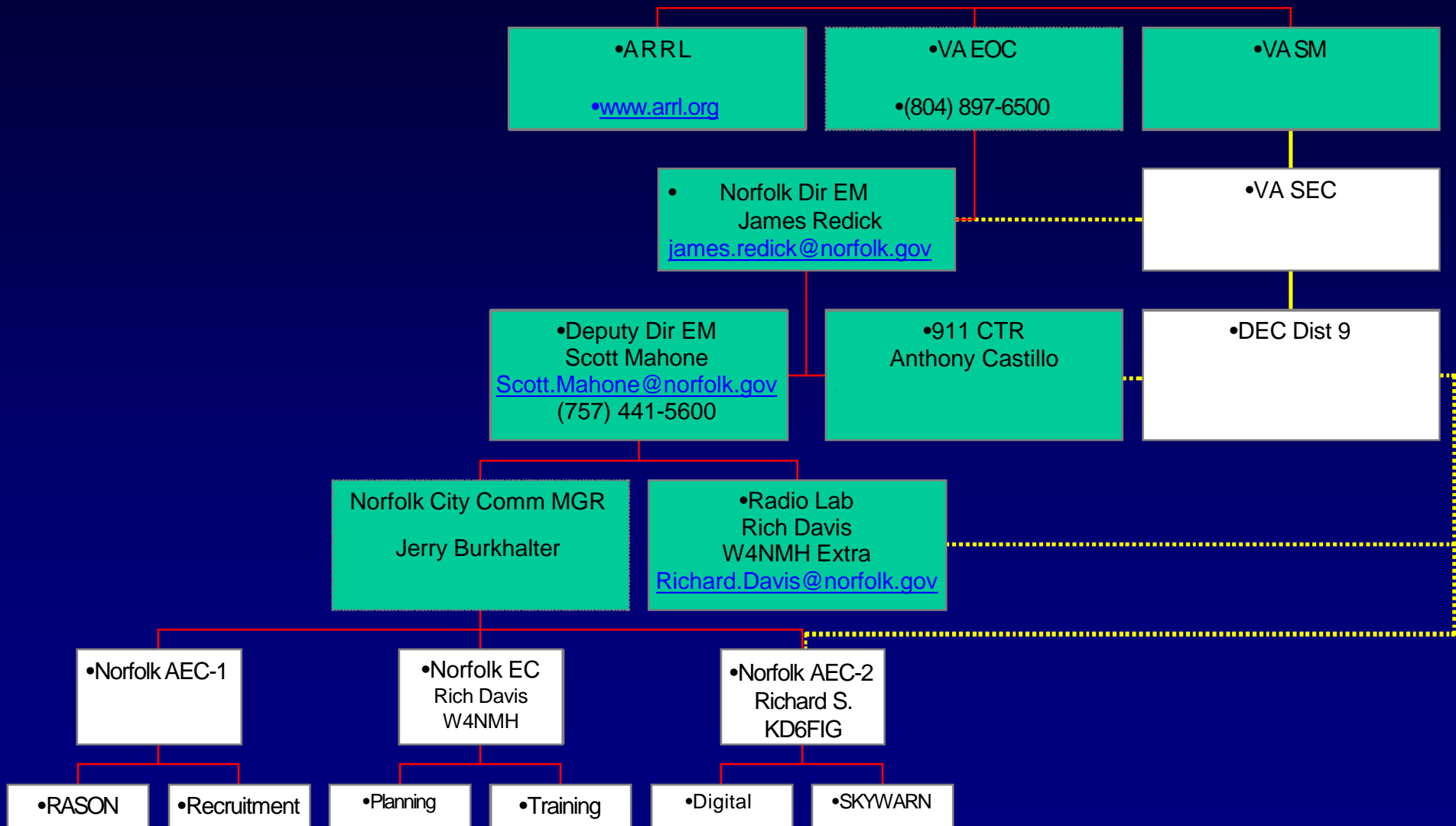
<http://navymars.org>

<http://www.RASONVA.org>



•NORFOLK ARES ORGANIZATION

•Rev. 4.0



- EMERGENCY COMMUNICATIONS

- What are some of the Emergencies?

•EMERGENCY COMMUNICATIONS

- What are some of the Emergencies?
- Airplane Crash, Train Crash, Industrial Accident
- Earthquakes, Fires
- Weather Related: Heat Wave (Drought),
 - Thunderstorms, Tornados, Hurricanes,
 - Winter Storms, Floods, Power Outages





• ARES OPERATIONS

- **HAM RADIO OPERATORS**
 - – Are NOT First Responders
 - – Must be Dispatched for a Tasking
 - – Must be able to work with
 - Volunteers and Career Personnel

•ARES OPERATIONS

- In what phases of an operation will HAM Radio play a role?

• OPERATIONS ROLES

-  **Planning / Training**
-  **Practice**
 - Operate during Public Service Events
 - Participate in Local Area NETS
-  **Standby**
 - Weather Spotter Activation
 - Other possible activations
-  **Activation: Receive Tasking**

•OPERATIONS ROLES

•Recovery

- **Damage Assessment: Reporting**
- **Search & Rescue: Resource Acquisition**
- **Aid Distribution Networks**
Food, Water, Information Dissemination
- **Restoration**
 - Provide Communications for a variety of restoration operations
 - **Health and Welfare Message Traffic**

•WHAT SHOULD WE DO?

•WHAT SHOULD WE DO?

- Check that your family is safe and Secure
- Check that your property is safe and secure
- Follow the instructions of ARES leadership

•INITIAL Actions

- Be prepared to operate. Check equipment operation.
- Check-in and deploy with Jump-Kit.
- Obtain Tactical Call sign (ID at end and every 10 Min.)
- Initiate log (Personal Log and Radio Log)
- Utilize log FORM to record Formal Messages Handled
- Monitor assigned frequency AT ALL TIMES.
- Notify Net Control if you have to leave. [BREAKS]

•OPERATING TIPS

- Use minimum power on a gain antenna; conserves batteries.
- “PAUSE” between exchanges
- Use “BREAK TAGS”
- Monitor/Listen much, transmit little
- Think before you talk: Stick to the Pertinent Facts
- Articulate, don’t slur. Use phonetics.
- Relay for weak stations
- DO NOT spread rumors: transmissions to be authenticated
- Strive for efficiency and accuracy
- All primary means of communications before relying on HAM
- DO NOT “Broadcast”, creates a disaster within a disaster

•WHAT TO BRING?

•WHAT TO BRING?

- ARES Identification Card, Driver's License, FCC License, Access Cards
- Radio: one mobile & one HT; Duel Band 2M/440
- Radio Accessories: Microphones, Earphone/ Headset, Connectors
- Antenna: (HT-Better than stock) Mobile Magnetic Mount, or 1/4 Wave
- Power Supply, Portable Power Pack, Battery Charger, Multi-Strip
- Radio Operating Manual
- Extra Coax (50 FT)
- Pen / Pencil, Clipboard, Message Forms, Log Book, Note Paper
- Net Directory (Communications Plan)
- Wrist Watch, a book or game to occupy inactive time
- Snacks, Liquid Refreshments, Personal Medication, Extra Cloths
- Extra pair of Prescription Glasses, Sunglasses
- Electrical Tape, Duct Tape, Spare Fuses, SWR Meter
- Cellular Telephone and Charger (Home / Car)
- Important Telephone Numbers

•WHAT TO BRING? MORE

- Additional Radios (Example FRS, CB)
- Foul Weather Gear
- Three-day Supply of Drinking Water
- Cooler with Three-day Supply of Food
- Mess Kit and Cleaning Supplies, First-Aid Kit, Tent, Sleeping Bag, Chair
- Toilet Articles, Alarm Clock, Flashlight / spare batteries
- Portable Lighting, Maps
- Water proof Matches (Lighter)
- Toolbox
- Soldering Iron, Volt-Ohm Meter
- Hatchet / ax, Saw, Pick, Shovel, Siphon
- Jumper Cables
- 3/8 Inch Rope, Highway Flares, Extra Oil and Gasoline
- Three-day change of cloths
- Safety Glasses, Helmet

•SUMMARY & REVIEW

•SUMMARY & REVIEW

- Introduction to Emergency Communications
- Norfolk ARES Organization
- Types of Emergencies
- Operational Roles
- Initial Actions
- Operating Tips
- What to Bring

• QUESTIONS?